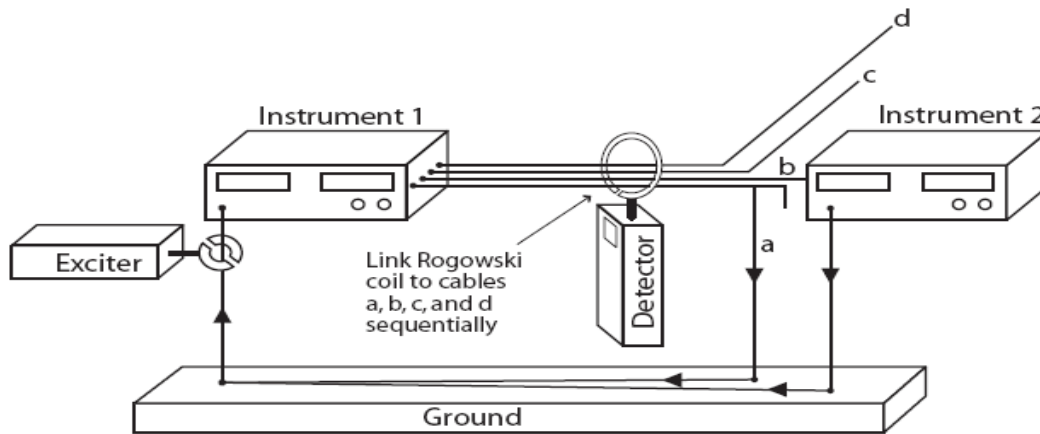


Brief Explanation of how the Loop Slooth™ works:

All wires shown are ground or shield wires.



The identity of the cable(s) involved in the ground loop is rapidly determined by linking the Exciter clamp-on transformer to a suspect cable or power cord and the Detector clamp-on Rogowski coil sequentially to cables a, b, c, and d. When the Detector Rogowski coil links one or both of cables a and b, the Detector LED illuminates indicating presence of ground loop current driven by the Exciter. If the Detector Rogowski coil links neither a nor b, then the indicator does not illuminate. The meter indicates relative amounts of ground loop current flowing in a, b circuits. See instruction manual and tutorial for more detail.
(figure and explanation copyright Circuit Insights LLC).



**Detector indicating current driven in ground loop by Exciter
(cable linked by both Exciter and Detector is part of ground loop)**