



## Creating a MOM 2005 Performance Graph Report From a Template

Last Reviewed:	October 17, 2005
Product Version:	MOM 2005
Reviewed By:	Justin Harter
Latest Content:	<a href="http://spaces.msn.com/members/jharter">http://spaces.msn.com/members/jharter</a>



# Introduction

This guide demonstrates how to create a simple performance graph report for MOM 2005 using a counter. While creating a simple report does not require advanced knowledge of Visual Studio, it will be EXTREMELY useful to have some knowledge of Visual Studio. It should also be noted that any performance counter can be graphed using the "Performance History" report in the Microsoft Windows Base Operating System directory. Although this is available, users generally want a simple report where they can get the necessary data they need. This guide helps fill that need.

## Prerequisites

To create a MOM 2005 report using this guide, you must have the following items installed:

### SERVER

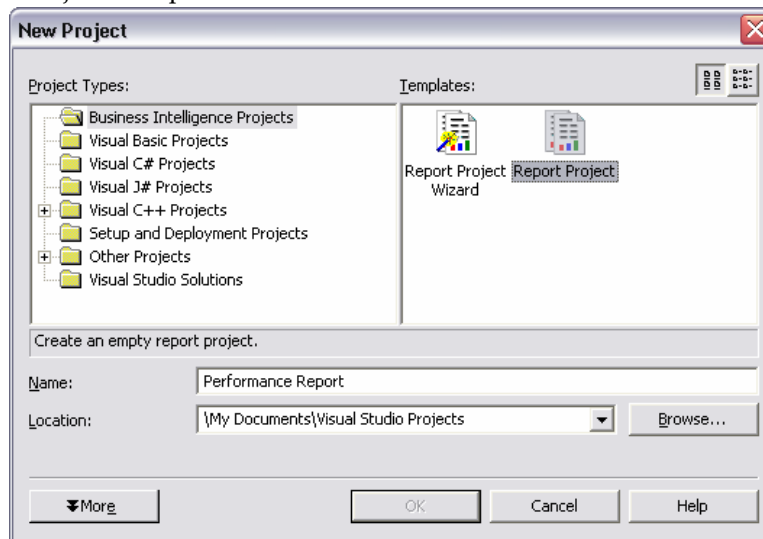
- SQL Reporting Services (server)
- MOM Reporting (server)

### CLIENT

- SQL Reporting Services (client components)
- Visual Studio .NET 2003

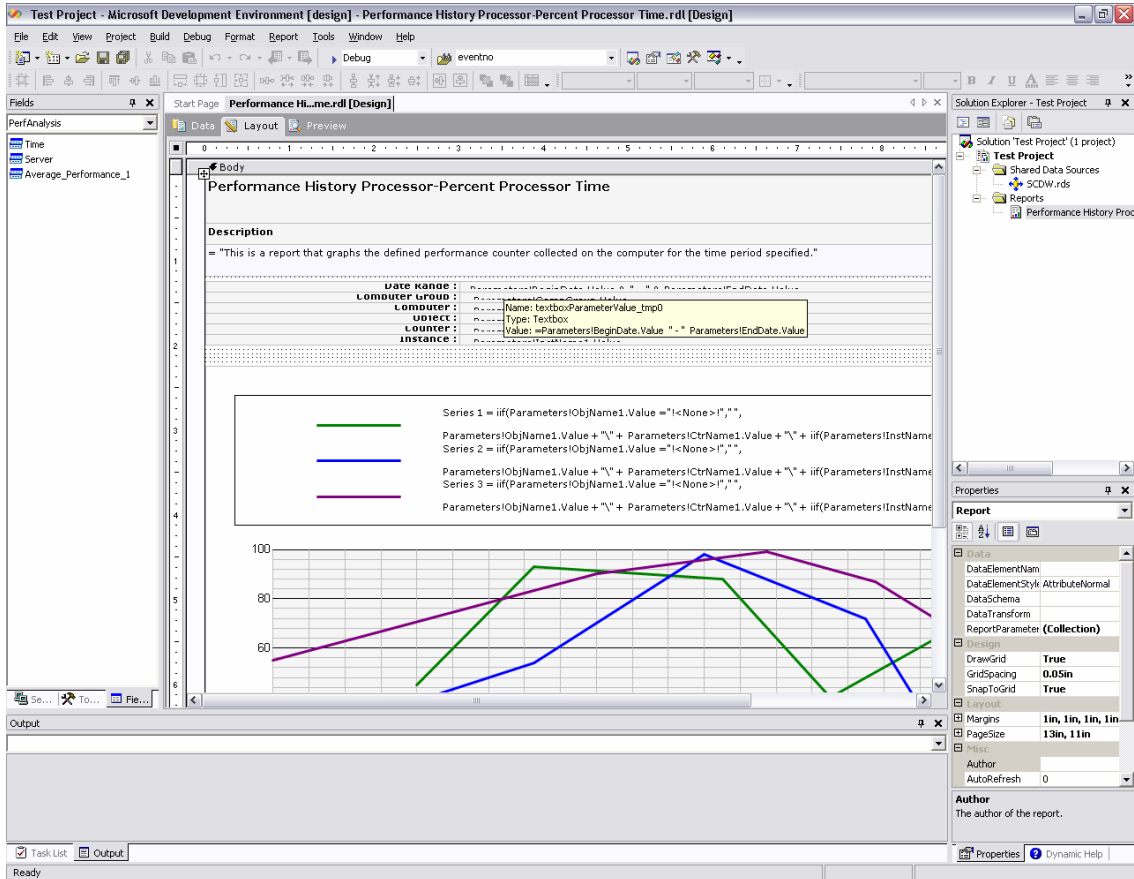
# Creating a Performance Report using a Template

1. Begin by opening Visual Studio .NET 200
2. Click File → New → Project
3. If you have installed SQL Reporting Services client components, you will see a project type of “Business Intelligence Projects”. Double click on the “Report Project” template.

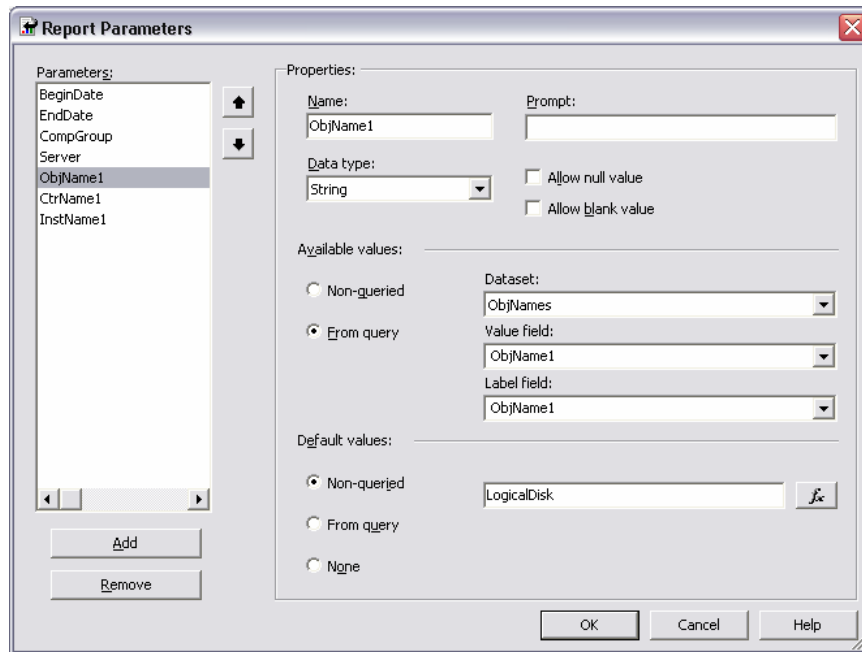


4. Next, we need to configure the data source. To do this, right click on the “Shared Data Sources” folder in the Solution Explorer (right side pane). This will bring up a dialog in which you must fill out the three areas (Server Name, Credentials, & Database). You need to point the data source to the MOM reporting server and the SystemCenterReporting database. For the credentials, I generally use the same account that I used for my other MOM reports. To check this go to the MOM reporting console and edit the existing SCDW data source. It will show you the credentials used. The DAS account would be a good choice for this. You may not be able to specify these credentials in the MOM wizard (I believe it will only accept SQL credentials). As a result, you may have to add the credentials after you post them to the MOM reporting site. In the meantime, simply use an integrated Windows account that has access.
5. Now we will rename the Data Source to “SCDW”. This way our existing template will work. Right click on the data source in the Solution Explorer (right side pane) and choose “Rename”. Then type in “SCDW.rds”.
6. Next, we will need to download the .rdl file that we will use as a template. For this example, I downloaded the .rdl file for “Performance History Processor-Percent Processor Time”. This report comes with the Windows Base Operating System Management Pack. To download this file, you need to navigate to the directory where this report is held in the MOM Reporting site. Then, click on the “Show Details” button. Finally, click on the edit icon that appears next to the report and click on the “Edit” link that appears in the page that follows.

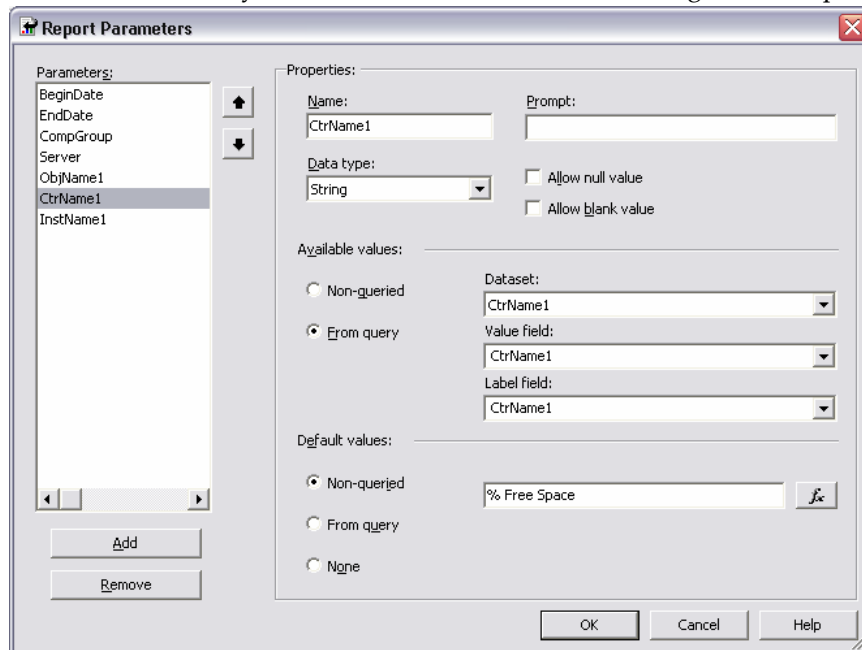
7. Next, we will import the .rdl file into Visual Studio. Right click on the “Reports” folder in the Solution Explorer (right side pane) and choose Add → Existing Item. Then choose the .rdl file that we saved earlier.
8. Double click on the newly imported report file in the Solution Explorer to open the report.



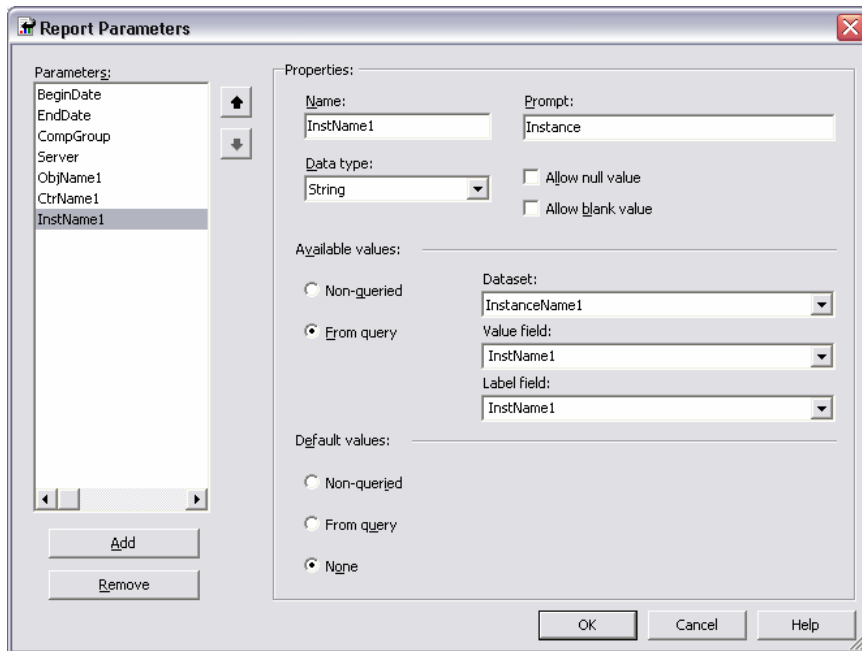
9. Right click on the newly imported report file in the Solution Explorer and choose Rename. I would name it something similar to what you’ll be graphing. In this example, I will be using the “% Free Space” counter, which is part of the “LogicalDisk” performance object, so I will name it “Performance History Logical Disk-Percent Free Space.rdl”.
10. Next, we will need to specify what counter we would like to graph. Like I said before, I will be graphing the % Free Space counter. To do this, we need to specify the performance object, counter and instance in the parameters. Click on the Report menu and choose “Report Parameters”.
11. Click on the ObjName1 parameter and change the default value to be the name of the performance object you wish to use. In this case I am using “LogicalDisk”. Note that these parameters must be set exactly to the names of the object, counter, and instance otherwise the report will not work.



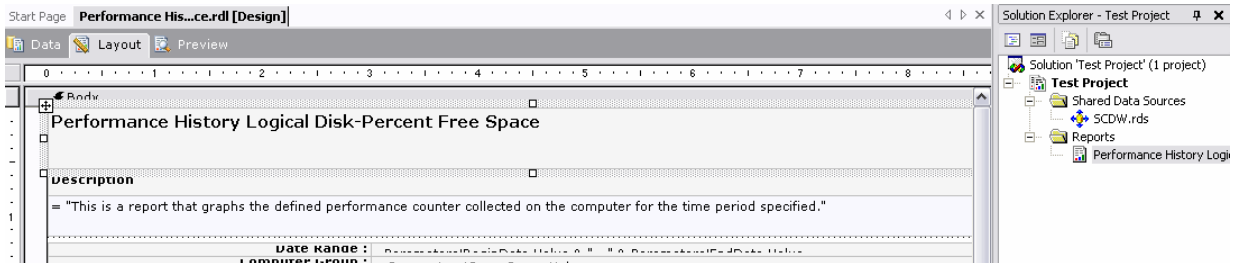
12. Next, click on the CtrName1 parameter and change the default value to be the name of the counter you wish to use. In this case I am using “% Free Space”.



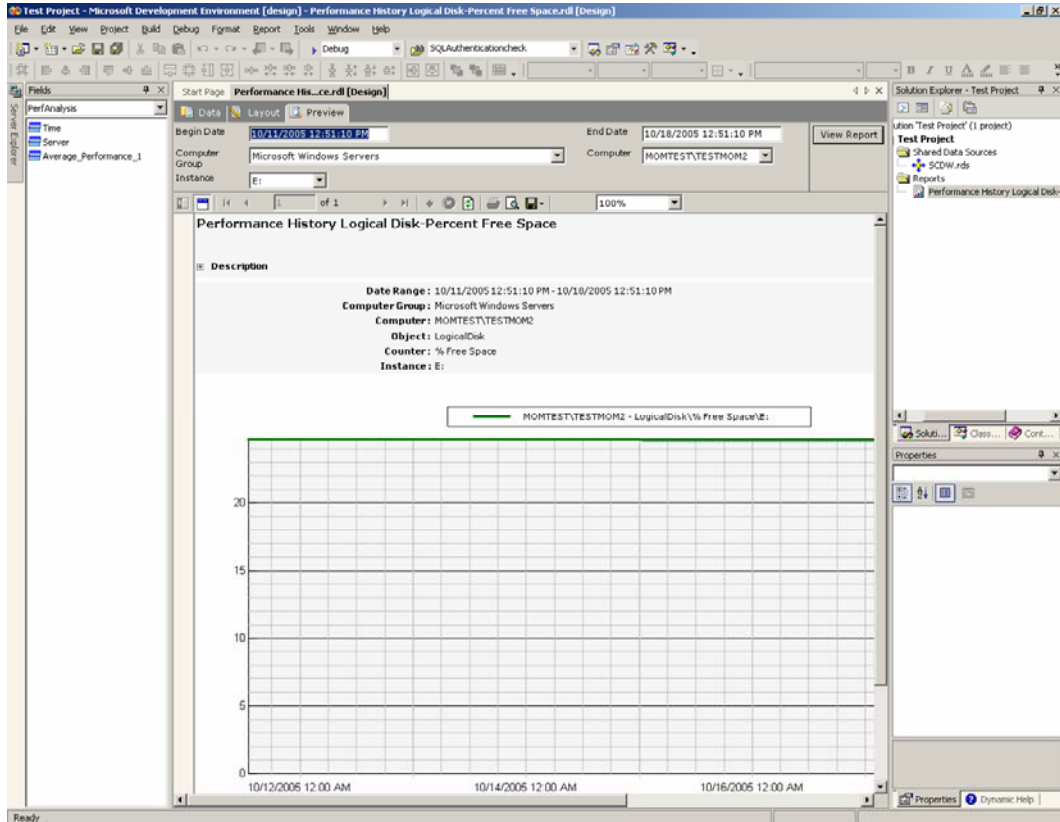
13. Next, click on the InstName1 parameter. Now, I could set this to be a static entry so that it pulls the same instance of the counter every time, but in this case I think it is best that this parameter be dynamic. This way I can run the report and choose which drive I would like to graph. To do this, change the default value of the parameter to be “None”. Also, add a prompt in for this parameter. I will put “Instance” as the prompt.



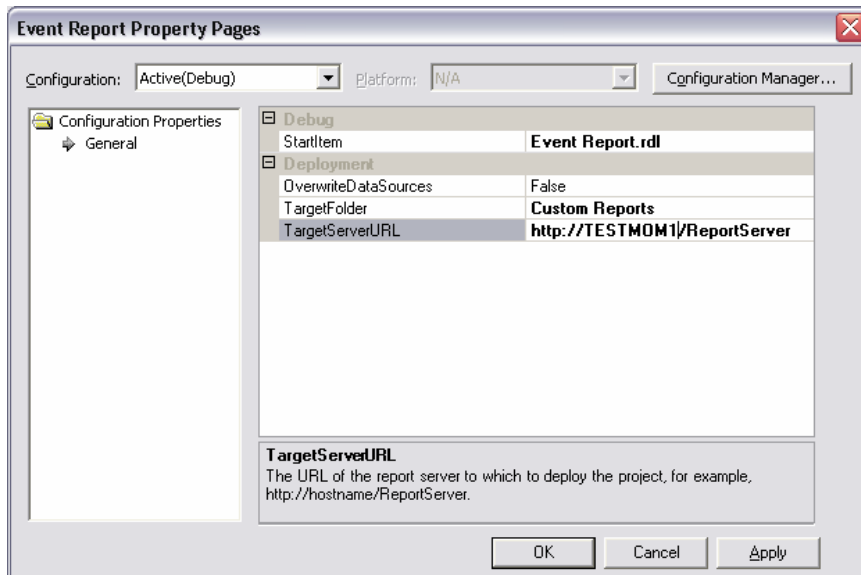
14. Click OK.
15. We are almost ready to preview the report now, but we still need to change the title of the report that is displayed when the report is run. Simply click on the title text box and type in a title for the report. I used "Performance History Logical Disk-Percent Free Space"



16. Now we are ready to preview our report. Click on the "Preview" tab and fill in the necessary information (Begin Date, End Date, Computer Group, Computer, and Instance). Then click the View Report button.



17. When you are satisfied with the report, we are ready to deploy it to the MOM reporting site. First we must specify where we want the report to be published. To do this, open up the report properties by going to Project menu → <report name> Properties. Change the target folder to something like Custom Reports. This is a recommended practice so that you do not accidentally lose your custom reports due to a change in the directory structure or an MP change.



18. Finally, click the Build menu and choose "Deploy Solution". You should now be able to navigate to the MOM reporting site and find your custom report.