

Serial Print Enabler

Make sure you have Ghostscript (OS X 10.2.x users only) and Gimp-Print or other suitable drivers installed. Also, make sure your printer is turned on.

Configure your printer after installing the software—

1. The printer should be added using the web interface of CUPS¹. To open the web interface, click on the following link <http://127.0.0.1:631/admin/?op=add-printer>. Following is an example of how to add a printer.
2. On the first page, all you need to do is enter a **Name** for the printer.



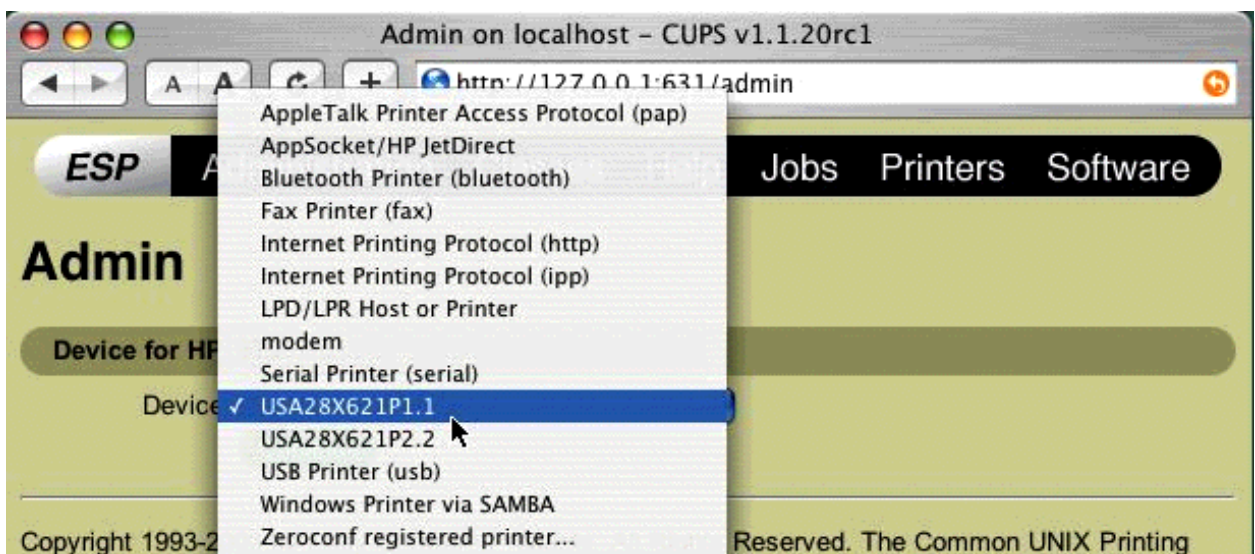
Add New Printer

Name:

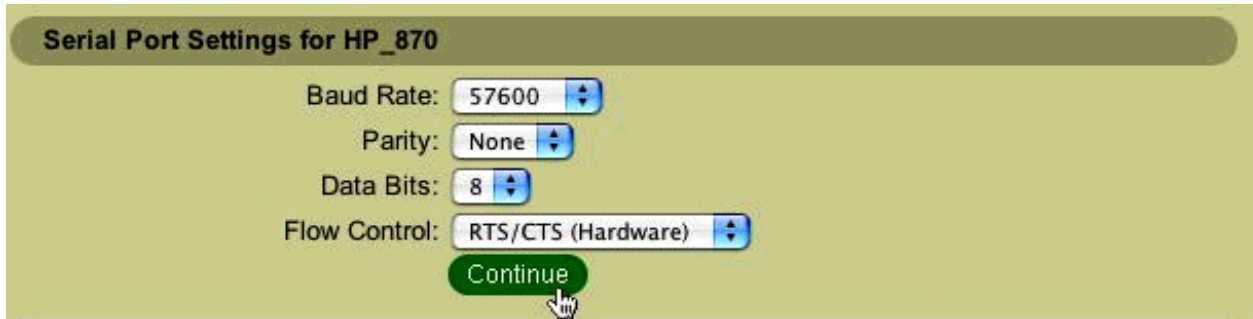
Location:

Description:

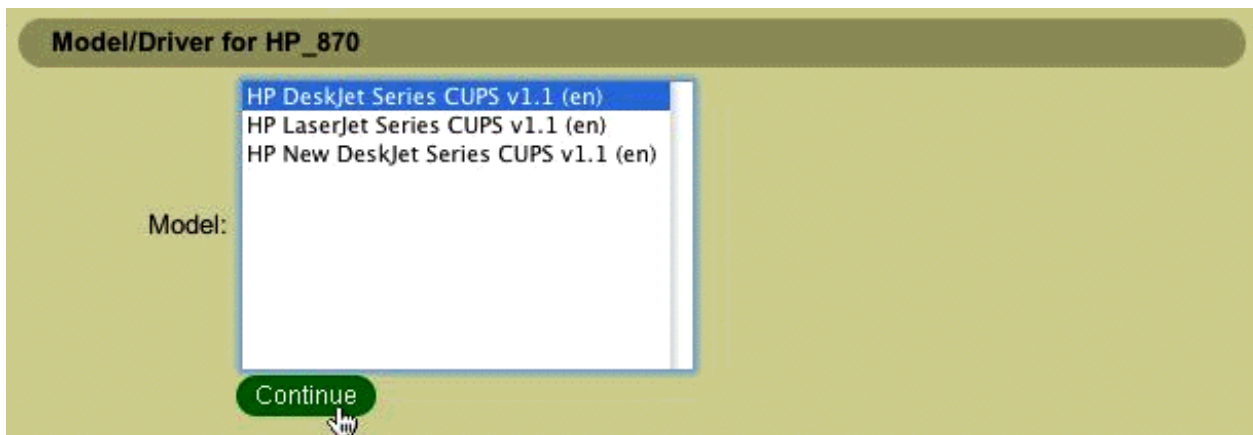
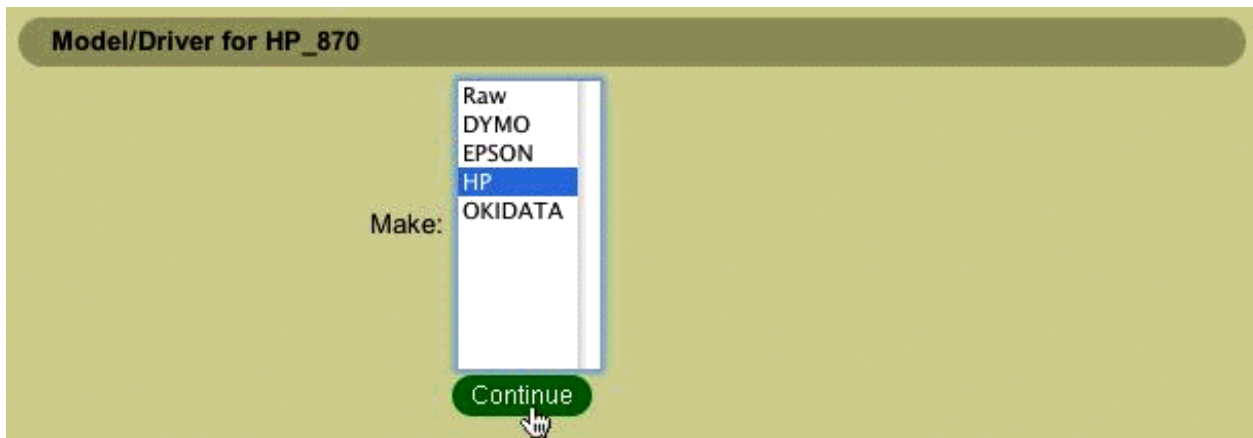
3. The second page will give you a pop up menu for **Devices**. In that menu, you will see the names of the serial ports (you will not see the printer's name). Select the port where your printer is attached. **Do not select "Serial Printer (serial)".**



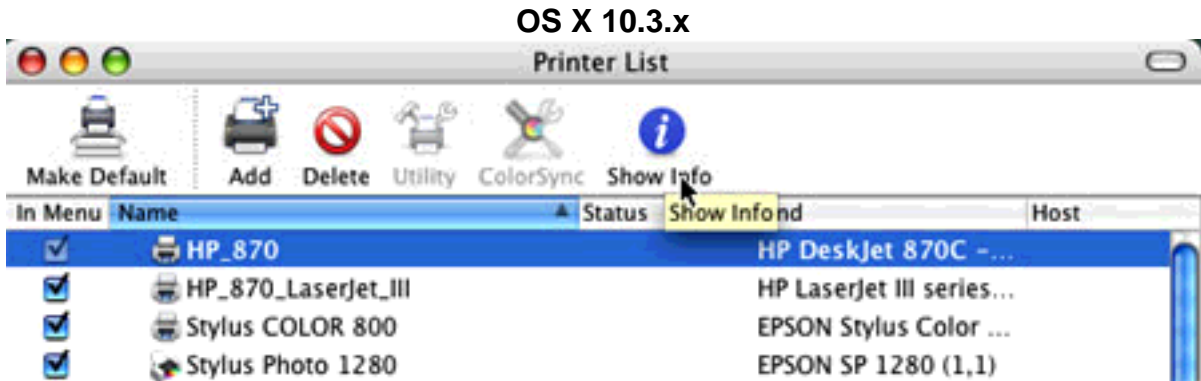
4. The third screen is the tough part but vital. Here you must select the **Baud Rate**, **Parity**, **Data Bits**, and **Flow Control** for your printer. A good place to start looking is in your owner's manual. For an HP 870, the correct settings are baud=57600; parity=none; data bits: 8; flow control RTS/CTS.



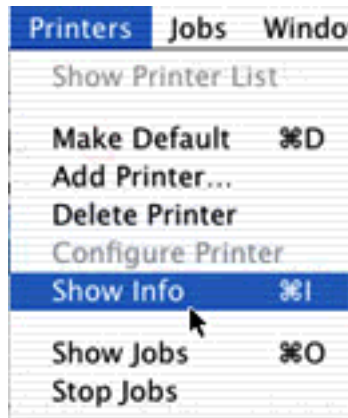
5. The fourth and fifth screens are where you select the **Make** and **Model** of your printer. Depending on the drivers you have installed, you may have many more options. If you don't see the exact model for your printer, select what seems the closest. You will be able to select a more appropriate model using the Print Center or Printer Setup Utility.



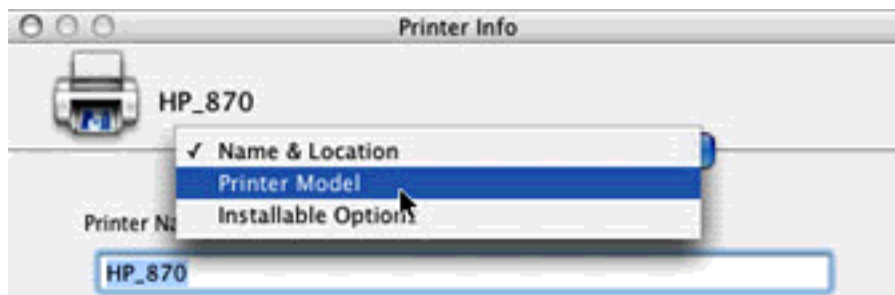
6. If you were able to select the exact model in the previous step, proceed to **step 10**.
7. Most of the latest driver versions will **not** show up via the web interface. You must now take some additional steps. Please open the **Print Center** or **Printer Setup Utility** as appropriate to make the necessary changes. First, highlight the printer you just added and click **Show Info**. OS X 10.2.x users will need to select **Show Info** from the **Printers** menu (keyboard shortcut command-I).



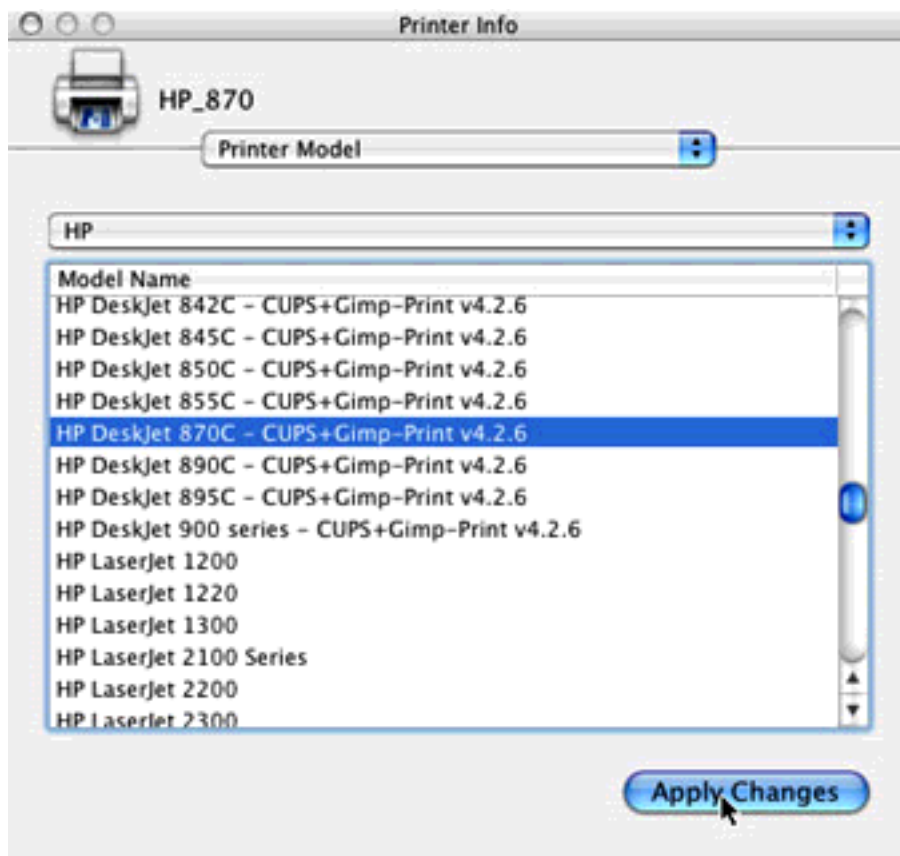
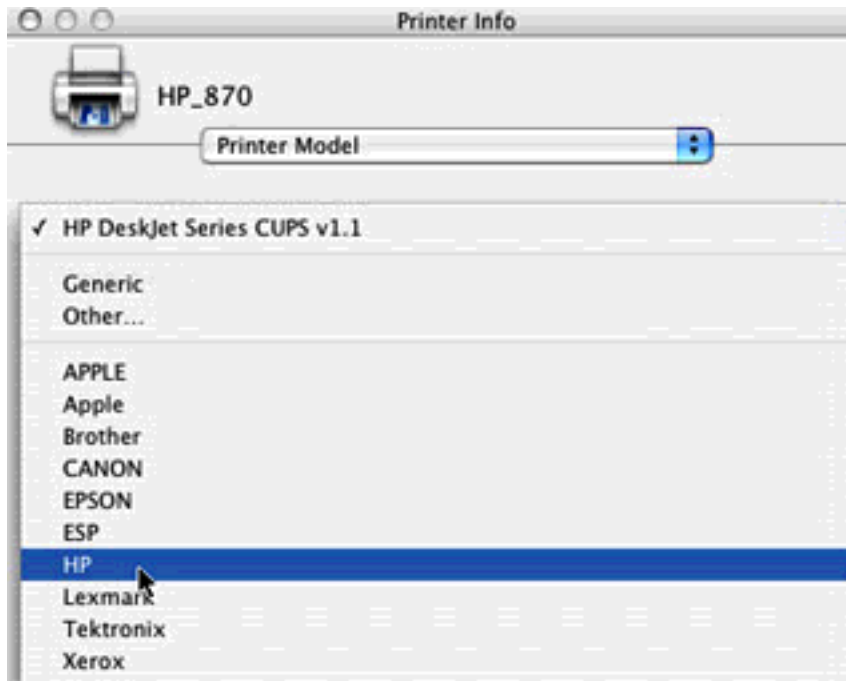
OS X 10.3.x or 10.2.x



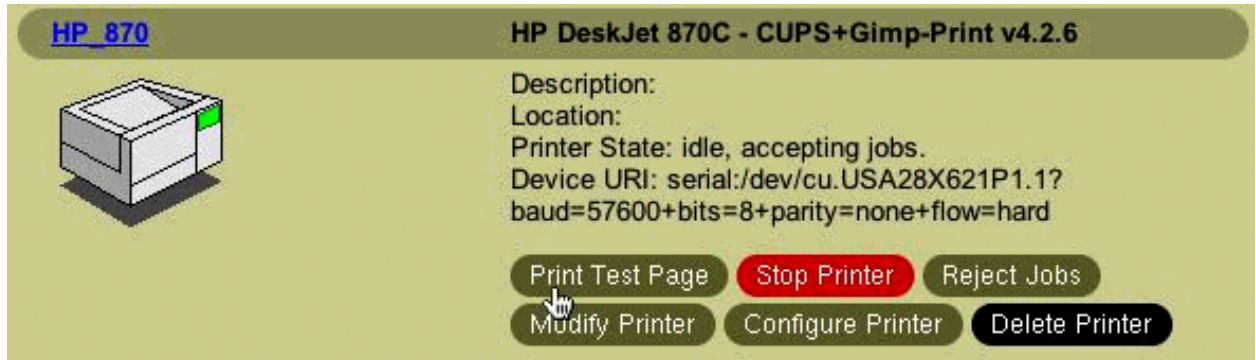
8. In the sheet that appears, use the pop up menu to select Printer Model option.



9. You can now select the **Make** and **Model** as outlined in the previous web example and **Apply Changes**.



10. The printer is now set up. To test your installation, you can go to <http://127.0.0.1:631/printers> and click **Print Test Page**.



If you have the wrong baud rate, flow control, or other setting wrong you may get no output or you may get page after page of raw output. Be ready to turn the printer off, stop, and delete the job etc.

NOTES:

1. If you try adding the printer via the Print Center, all will appear to be fine until you click the "Add" button at the end. Print Center will just sit there and not add the printer.

Acknowledgements:

Many thanks to Alan Somers for his guidance and help in making the first package installer for this project.