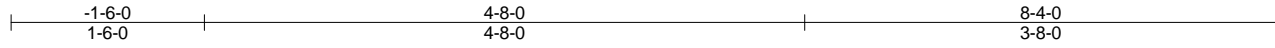


Job	Truss	Truss Type	Qty	Ply	S.T.T. - Bill Burns / Revision #2
BILL BURNS - REVISIO-3	A01	MONO TRUSS	13	1	Job Reference (optional)

Stark Truss Co., Inc, Summerville, SC 29483

7.100 s Sep 25 2008 MiTek Industries, Inc. Mon Oct 05 14:05:00 2009 Page 1



Scale = 1:17.9

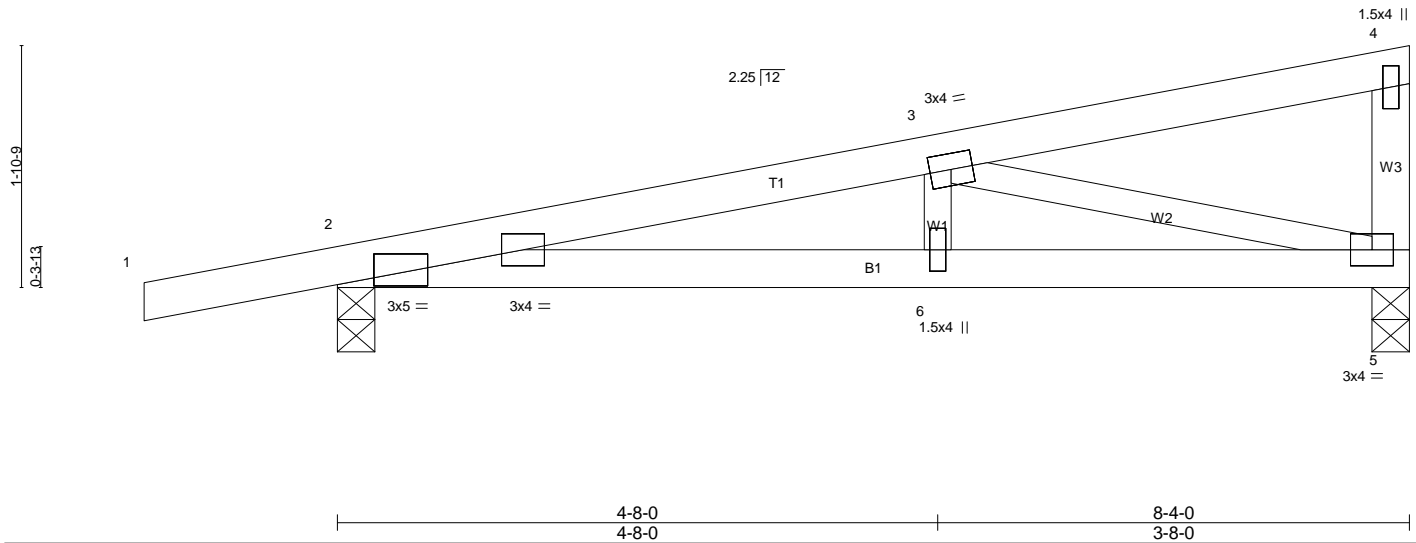


Plate Offsets (X,Y): [2:0-3-7,0-0-2]					
LOADING (psf)	SPACING 2-0-0	CSI	DEFL in (loc) l/defl L/d	PLATES	GRIP
TCLL 20.0	Plates Increase 1.15	TC 0.16	Vert(LL) 0.06 2-6 >999 360	MT20	197/144
TCDL 10.0	Lumber Increase 1.15	BC 0.25	Vert(TL) -0.06 2-6 >999 240		
BCLL 0.0 *	Rep Stress Incr YES	WB 0.27	Horz(TL) 0.01 5 n/a n/a		
BCDL 10.0	Code IRC2006/TPI2002	(Matrix)			Weight: 32 lb

LUMBER	BRACING
TOP CHORD 2 X 4 SYP No.2	TOP CHORD Structural wood sheathing directly applied or 6-0-0 oc purlins, except end verticals.
BOT CHORD 2 X 4 SYP No.2	BOT CHORD Rigid ceiling directly applied or 8-3-12 oc bracing.
WEBS 2 X 3 SPF No.2 *Except* W3: 2 X 4 SYP No.3	

REACTIONS (lb/size) 2=271/0-1-8 (input: 0-3-8), 5=206/0-1-8 (input: 0-3-8)
 Max Horz 2=40(LC 8)
 Max Uplift 2=-96(LC 9), 5=-55(LC 7)
 Max Grav 2=431(LC 2), 5=312(LC 2)

FORCES (lb) - Max. Comp./Max. Ten. - All forces 250 (lb) or less except when shown.
 TOP CHORD 2-3=-782/559
 BOT CHORD 2-6=-541/741, 5-6=-541/741
 WEBS 3-5=-764/582

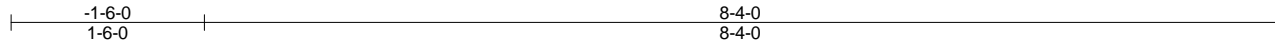
- NOTES**
- 1) Wind: ASCE 7-05; 90mph; TCDL=6.0psf; BCDL=6.0psf; h=25ft; Cat. II; Exp B; enclosed; MWFRS (low-rise) and C-C Exterior(2) zone; cantilever left and right exposed ; end vertical left and right exposed; porch left and right exposed;C-C for members and forces & MWFRS for reactions shown; Lumber DOL=1.15 plate grip DOL=1.15
 - 2) TCLL: ASCE 7-05; Pr=20.0 psf (roof live load: Lumber DOL=1.15 Plate DOL=1.15); Pg=10.0 psf (ground snow); Pf=6.3 psf (flat roof snow: Lumber DOL=1.00 Plate DOL=1.00); Category II; Exp B; Fully Exp.; Ct= 1; IBC 1608.3 minimum flat roof snow load governs.
 - 3) Unbalanced snow loads have been considered for this design.
 - 4) This truss has been designed for greater of min roof live load of 16.0 psf or 1.00 times flat roof load of 6.3 psf on overhangs non-concurrent with other live loads.
 - 5) This truss has been designed for a 10.0 psf bottom chord live load nonconcurrent with any other live loads.
 - 6) * This truss has been designed for a live load of 20.0psf on the bottom chord in all areas where a rectangle 3-6-0 tall by 2-0-0 wide will fit between the bottom chord and any other members.
 - 7) Provide mechanical connection (by others) of truss to bearing plate capable of withstanding 100 lb uplift at joint(s) 2, 5.
 - 8) This truss is designed in accordance with the 2006 International Residential Code sections R502.11.1 and R802.10.2 and referenced standard ANSI/TPI 1.

LOAD CASE(S) Standard

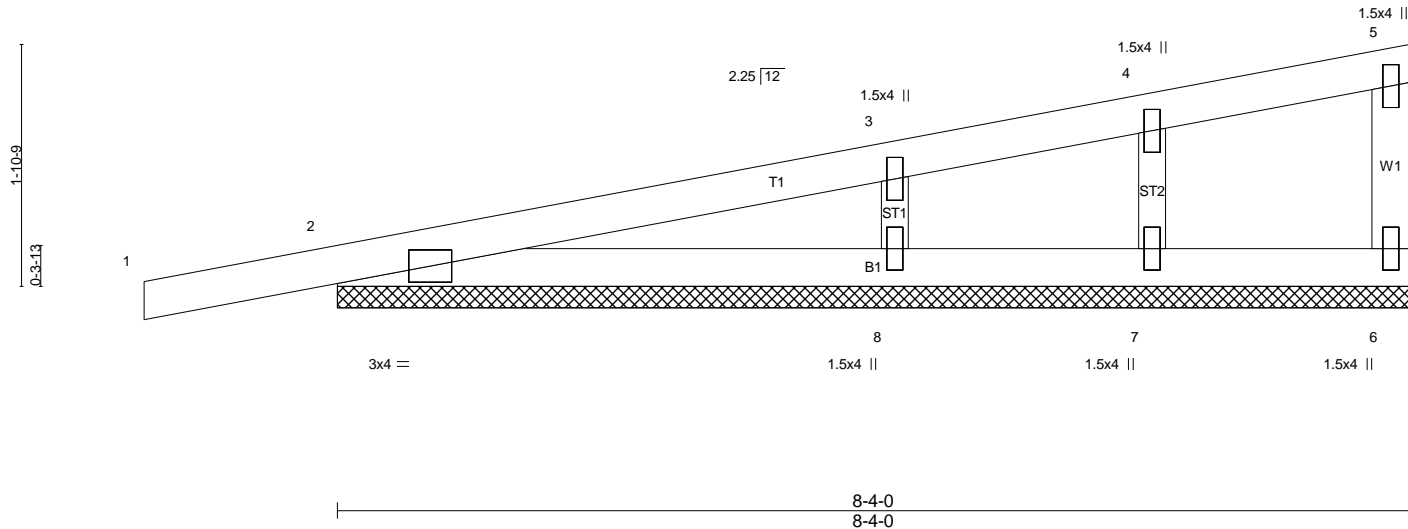
Job	Truss	Truss Type	Qty	Ply	S.T.T. - Bill Burns / Revision #2
BILL BURNS - REVISIO-3	A01GE	GABLE	1	1	Job Reference (optional)

Stark Truss Co., Inc, Summerville, SC 29483

7.100 s Sep 25 2008 MiTek Industries, Inc. Mon Oct 05 14:05:01 2009 Page 1



Scale = 1:17.9



LOADING (psf)	SPACING	CSI	DEFL	in (loc)	l/defl	L/d	PLATES	GRIP
TCLL 20.0	2-0-0	TC 0.16	Vert(LL) -0.01	1	n/r	180	MT20	197/144
TCDL 10.0	Plates Increase 1.15	BC 0.13	Vert(TL) -0.00	1	n/r	80		
BCLL 0.0 *	Lumber Increase 1.15	WB 0.04	Horz(TL) 0.00	6	n/a	n/a		
BCDL 10.0	Rep Stress Incr YES	(Matrix)						
	Code IRC2006/TPI2002							
							Weight: 30 lb	

LUMBER	BRACING
TOP CHORD 2 X 4 SYP No.2	TOP CHORD Structural wood sheathing directly applied or 6-0-0 oc purlins, except end verticals.
BOT CHORD 2 X 4 SYP No.2	BOT CHORD Rigid ceiling directly applied or 10-0-0 oc bracing.
WEBS 2 X 4 SYP No.3	
OTHERS 2 X 3 SPF No.2	

REACTIONS All bearings 8-4-0.
 (lb) - Max Horz 2=40(LC 8)
 Max Uplift All uplift 100 lb or less at joint(s) 2, 7
 Max Grav All reactions 250 lb or less at joint(s) 6, 7 except 2=252(LC 2), 8=319(LC 2)

FORCES (lb) - Max. Comp./Max. Ten. - All forces 250 (lb) or less except when shown.

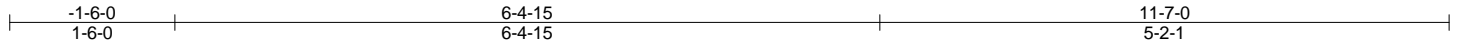
- NOTES**
- 1) Wind: ASCE 7-05; 90mph; TCDL=6.0psf; BCDL=6.0psf; h=25ft; Cat. II; Exp B; enclosed; MWFRS (low-rise) and C-C Exterior(2) zone; cantilever left and right exposed; end vertical left and right exposed; porch left and right exposed; C-C for members and forces & MWFRS for reactions shown; Lumber DOL=1.15 plate grip DOL=1.15
 - 2) Truss designed for wind loads in the plane of the truss only. For studs exposed to wind (normal to the face), see MiTek "Standard Gable End Detail"
 - 3) TCLL: ASCE 7-05; Pr=20.0 psf (roof live load: Lumber DOL=1.15 Plate DOL=1.15); Pg=10.0 psf (ground snow); Pf=6.3 psf (flat roof snow: Lumber DOL=1.00 Plate DOL=1.00); Category II; Exp B; Fully Exp.; Ct= 1; IBC 1608.3 minimum flat roof snow load governs.
 - 4) Unbalanced snow loads have been considered for this design.
 - 5) This truss has been designed for greater of min roof live load of 16.0 psf or 1.00 times flat roof load of 6.3 psf on overhangs non-concurrent with other live loads.
 - 6) Gable requires continuous bottom chord bearing.
 - 7) Gable studs spaced at 2-0-0 oc.
 - 8) This truss has been designed for a 10.0 psf bottom chord live load nonconcurrent with any other live loads.
 - 9) * This truss has been designed for a live load of 20.0psf on the bottom chord in all areas where a rectangle 3-6-0 tall by 2-0-0 wide will fit between the bottom chord and any other members.
 - 10) Provide mechanical connection (by others) of truss to bearing plate capable of withstanding 100 lb uplift at joint(s) 2, 7.
 - 11) This truss is designed in accordance with the 2006 International Residential Code sections R502.11.1 and R802.10.2 and referenced standard ANSI/TPI 1.

LOAD CASE(S) Standard

Job	Truss	Truss Type	Qty	Ply	S.T.T. - Bill Burns / Revision #2
BILL BURNS - REVISIO-3	B01	MONO TRUSS	3	1	Job Reference (optional)

Stark Truss Co., Inc, Summerville, SC 29483

7.100 s Sep 25 2008 MiTek Industries, Inc. Mon Oct 05 14:05:01 2009 Page 1



Scale = 1:20.9

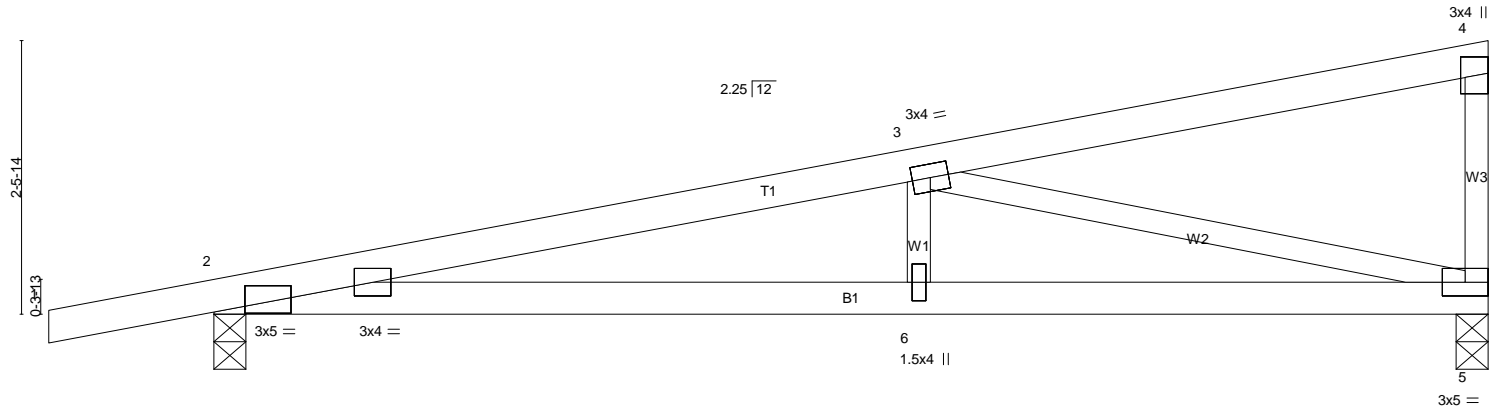


Plate Offsets (X,Y): [2:0-3-7,0-0-2]

LOADING (psf)	SPACING	CSI	DEFL	in (loc)	l/defl	L/d	PLATES	GRIP
TCLL 20.0	2-0-0	TC 0.36	Vert(LL) 0.15	2-6	>914	360	MT20	197/144
TCDL 10.0	Plates Increase 1.15	BC 0.41	Vert(TL) -0.17	2-6	>795	240		
BCLL 0.0 *	Lumber Increase 1.15	WB 0.78	Horz(TL) 0.02	5	n/a	n/a		
BCDL 10.0	Rep Stress Incr YES	(Matrix)						
	Code IRC2006/TPI2002							Weight: 43 lb

LUMBER

TOP CHORD 2 X 4 SYP No.2
 BOT CHORD 2 X 4 SYP No.2
 WEBS 2 X 3 SPF No.2

BRACING

TOP CHORD Structural wood sheathing directly applied or 5-3-11 oc purlins, except end verticals.
 BOT CHORD Rigid ceiling directly applied or 6-10-11 oc bracing.

REACTIONS (lb/size) 2=356/0-1-8 (input: 0-3-8), 5=294/0-1-8 (input: 0-3-8)
 Max Horz 2=55(LC 8)
 Max Uplift 2=-118(LC 9), 5=-80(LC 7)
 Max Grav 2=559(LC 2), 5=446(LC 2)

FORCES (lb) - Max. Comp./Max. Ten. - All forces 250 (lb) or less except when shown.

TOP CHORD 2-3=-1219/809
 BOT CHORD 2-6=-785/1162, 5-6=-785/1162
 WEBS 3-5=-1139/801

NOTES

- 1) Wind: ASCE 7-05; 90mph; TCDL=6.0psf; BCDL=6.0psf; h=25ft; Cat. II; Exp B; enclosed; MWFRS (low-rise) and C-C Exterior(2) zone; cantilever left and right exposed; end vertical left and right exposed; porch left and right exposed; C-C for members and forces & MWFRS for reactions shown; Lumber DOL=1.15 plate grip DOL=1.15
- 2) TCLL: ASCE 7-05; Pr=20.0 psf (roof live load: Lumber DOL=1.15 Plate DOL=1.15); Pg=10.0 psf (ground snow); Pf=6.3 psf (flat roof snow: Lumber DOL=1.00 Plate DOL=1.00); Category II; Exp B; Fully Exp.; Ct= 1; IBC 1608.3 minimum flat roof snow load governs.
- 3) Unbalanced snow loads have been considered for this design.
- 4) This truss has been designed for greater of min roof live load of 16.0 psf or 1.00 times flat roof load of 6.3 psf on overhangs non-concurrent with other live loads.
- 5) This truss has been designed for a 10.0 psf bottom chord live load nonconcurrent with any other live loads.
- 6) * This truss has been designed for a live load of 20.0psf on the bottom chord in all areas where a rectangle 3-6-0 tall by 2-0-0 wide will fit between the bottom chord and any other members.
- 7) Provide mechanical connection (by others) of truss to bearing plate capable of withstanding 100 lb uplift at joint(s) 5 except (jt=lb) 2=118.
- 8) This truss is designed in accordance with the 2006 International Residential Code sections R502.11.1 and R802.10.2 and referenced standard ANSI/TPI 1.

LOAD CASE(S) Standard